

2018 KS2 School Dashboard for governors & school leaders

Produce custom dashboards at
www.fftaspire.org

Beis Yaakov Primary School

LA Barnet DFE 3022079 Produced September 2018 Version 1

What it is

Seven easy-to-use reports which help governors and school leaders to evaluate school performance using the latest 2017 DFE school performance indicators.

What it tells you

- What are the strengths and areas for improvement in your school?
- How does attainment and pupil progress compare to the national average?
- How are you performing in different subjects?
- Do you have any under-performing groups of pupils?
- How might the context of your school affect performance?
- How does pupil attendance compare to the national average?

About the data shown

1 2 3

Actual results

Actual results for your school, using a range of measures such as averages and thresholds.



Gauges

These display headline indicators and whether actual results and pupils' progress are in line with, or significantly above or below, the national average.

ESTIMATED



1 2 3

Pupil progress

The value added progress that your pupils have made from one key stage to the next. FFT compares your actual results to the estimated results based on the progress of similar pupils nationally.



Statistical significance

Green plus signs and red minus signs highlight where either actual results or pupils' progress is significantly above or below the national average.



Trends

The dashboard analyses school performance over 3-5 years. Any significant year-on-year improvement is highlighted using an up arrow. Significant declines in performance are highlighted with a down arrow.



Strengths & weaknesses

These highlight key pupil groups and subjects where progress is above or below the national average.

Working in partnership with



Data sources

Generated from FFT Aspire which includes data sourced from the DfE (National Pupil Database) and data calculated by FFT. FFT is accredited as a DfE supplier to receive early access to ASP data. Headline performance indicators will be consistent with the DfE School Performance Tables and ASP.

Overview

KS2 Attainment 2018 · Actual results

60 pupils

KS2 Progress 2018 · Value Added

56 matched pupils

Average Scaled Score (Re, Ma)

% Expected standard+ (Re, Wr, Ma)

Average Scaled Score (Re, Ma)

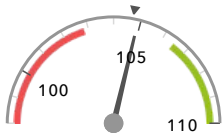
% Expected standard+ (Re, Wr, Ma)

104.9

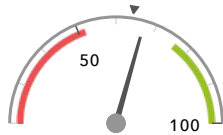
67%

-0.1

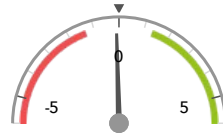
-4%



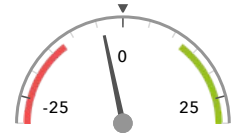
In line with the national average (104.7) ◀



In line with the national average (64%) ◀



In line with the national average (0) ◀



In line with the national average (0%) ◀

KS2 higher and lower performing pupil groups 2018

	Higher performing	Lower performing
Overall achievement pupil progress	Lower attainers (16) Summer Term (19) Middle attainers (18)	Higher attainers (22) ⬇️ First language not English (12) Autumn Term (17)
KS2 reading achievement pupil progress	FSM (ever) (8) FSM (in last 6 years) (8) Lower attainers (16) ⬆️	First language not English (12) Higher attainers (22)
KS2 writing achievement pupil progress	Lower attainers (16) FSM (ever) (8) FSM (in last 6 years) (8)	Higher attainers (22) ⬇️ First language not English (12) Spring Term (20)
KS2 mathematics achievement pupil progress	Lower attainers (16) ⬇️	Higher attainers (22) ⬇️ Autumn Term (17) ⬇️ Spring Term (20) ⬇️
KS2 grammar, punctuation & spelling achievement pupil progress	Lower attainers (16) Summer Term (19) First language English (44) ⬆️	First language not English (12) FSM (5)

Attainment & progress

KS2 Attainment 2018

60 pupils

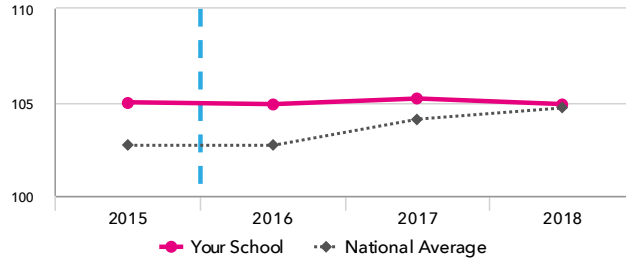
Average Scaled Score (Re, Ma)

104.9

FFT Rank



In line with the national average (104.7)



KS2 Progress 2018

56 matched pupils

Average Scaled Score (Re, Ma)

-0.1

FFT Rank



In line with the national average (0)

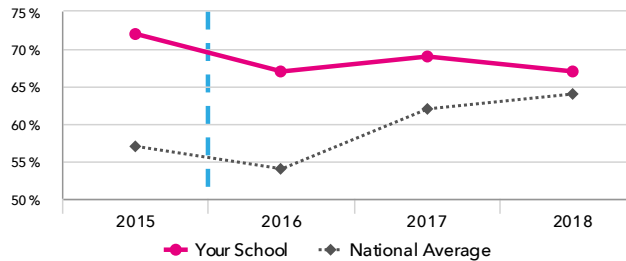
% Expected standard+ (Re, Wr, Ma)

-4%

FFT Rank



In line with the national average (0%)



% Expected standard+ (Re, Wr, Ma)

67%

FFT Rank



In line with the national average (64%)

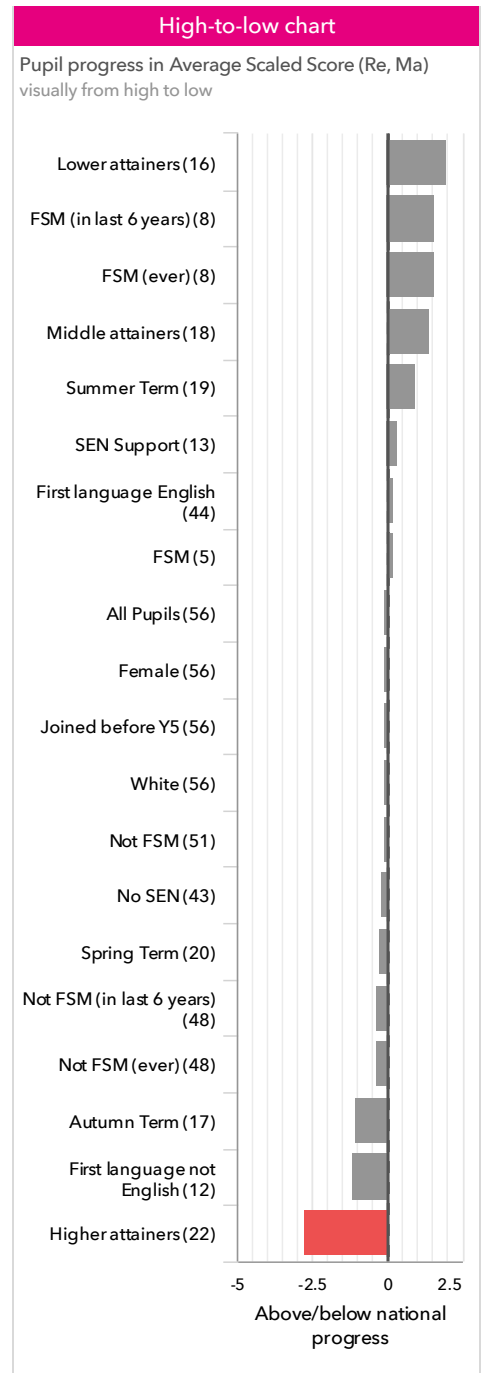
KS2 performance summary

	Actual results			Pupil progress		
	2016	2017	2018	2016	2017	2018
Number of Pupils / % Matched	60	62	60	97%	94%	93%
% Expected standard+ (Re, Wr, Ma)	67% +	69%	67%	+1%	+4%	-4%
% Higher standard (Re, Wr, Ma)	12% +	10%	2% -	+6%	+2%	-9% -
Average Scaled Score (Re, GPS, Ma)	105.1 +	105.6	105.0	+0.3 ↓	+1.1	-0.2
Average Scaled Score (Re, Ma)	104.9 +	105.2	104.9	+0.5 ↓	+1.1	-0.1
% Expected standard+ Reading	75%	71%	87% + ↑	-2%	-5%	+7%
% Higher standard Reading	20%	26%	37%	-2%	+1%	+3%
Scaled Score Reading	104.2	104.2	106.9 ↑	-0.2 ↓	+0.2	+1.6
% Expected standard+ Writing	83%	82%	82%	-4%	-1%	-4%
% Higher standard Writing	23% ↓	11%	8% -	+5% ↓	-8%	-15% -
Scaled Score Writing	103.1 +	102.0	101.4	+0.5	+0.0	-1.2
% Expected standard+ Maths	88% +	92% +	77% ↓	+10%	+15% +	-2% ↓
% Higher standard Maths	17%	24%	5% - ↓	+0%	+4%	-17% - ↓
Scaled Score Maths	105.5 +	106.2 +	102.8 ↓	+1.0	+2.0 +	-1.7 - ↓
% Expected standard+ Grammar, Punctuation & Spelling	83%	79%	88% +	-2%	-3%	+6%
% Higher standard Grammar, Punctuation & Spelling	18%	26%	40%	-8%	-8%	+2%
Scaled Score Grammar, Punctuation & Spelling	105.0	105.9	107.4	-0.8	-0.1	+1.1
% Expected standard+ Science	97% +	95% +	97% +	-	-	-
Average Point Score (Re, Wr, Ma)	-	-	-	-	-	-
% Level 4+ (Re, Wr, Ma)	-	-	-	-	-	-
% Level 4B+ (Re, Wr, Ma)	-	-	-	-	-	-
% Level 5+ (Re, Wr, Ma)	-	-	-	-	-	-

Pupil groups

KS2 Pupil groups performance 2018

		Pupils	Actual results			Pupil progress		
			Average Scaled Score (Re, Ma)	% Expected standard + (Re, Wr, Ma)	% Higher standard (Re, Wr, Ma)	Average Scaled Score (Re, Ma)	% Expected standard + (Re, Wr, Ma)	% Higher standard (Re, Wr, Ma)
Summary	All Pupils >	60	104.9	67%	2% ⬇	-0.1	-4%	-9% ⬇
Gender	Female >	60	104.9	67%	2% ⬇	-0.1	-4%	-9% ⬇
Prior Attainment	Higher attainers >	22	106.8 ⬇ ⬇	91%	5% ⬇	-2.8 ⬇ ⬇	-3%	-20% ⬇
	Middle attainers >	18	105.6	61%	0%	+1.4	-9%	-2%
	Lower attainers >	16	100.0	31%	0%	+2.0	+0%	-0%
Pupil Premium	FSM (in last 6 years) >	9	105.6	78%	0%	+1.6	+11%	-8%
	Not FSM (in last 6 years) >	51	104.7	65%	2% ⬇	-0.4	-6%	-9%
FSM	FSM >	5	104.4	60%	0%	+0.2	-5%	-10%
	Not FSM >	55	104.9	67%	2% ⬇	-0.1	-4%	-8%
FSM Ever	FSM (ever) >	9	105.6	78%	0%	+1.6	+11%	-8%
	Not FSM (ever) >	51	104.7	65%	2% ⬇	-0.4	-6%	-9%
Term of Birth	Autumn Term >	19	104.8	79%	0%	-1.0	+8%	-10%
	Spring Term >	20	106.0	65%	0%	-0.2	-12%	-16%
	Summer Term >	21	103.9	57%	5%	+0.9	-6%	+0%
SEN Group	SEN Support >	14	100.9	36%	0%	+0.3	-15%	-2%
	No SEN >	46	106.1	76%	2% ⬇	-0.2	-0%	-11% ⬇
EAL	First language not English >	15	104.2	67%	0%	-1.1	-8%	-11%
	First language English >	45	105.1	67%	2%	+0.2	-3%	-8%
Mobility	Joined before Y5 >	60	104.9	67%	2% ⬇	-0.1	-4%	-9% ⬇
Ethnicity	White >	60	104.9	67%	2% ⬇	-0.1	-4%	-9% ⬇



Subjects

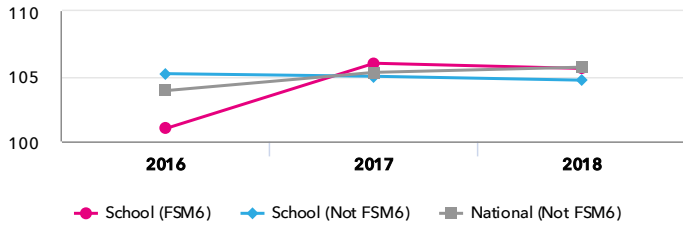
KS2 subject performance 2018

	Actual results			Pupil progress			Actual results over time		
	2016	2017	2018	2016	2017	2018			
Number of Pupils / % Matched	60	62	60	97%	94%	93%			
Reading									
% Expected standard+	75%	71%	87% + ↑	-2%	-5%	+7%			
% Higher standard	20%	26%	37%	-2%	+1%	+3%			
Scaled Score	104	104	107 ↑	-0.2 ↓	+0.2	+1.6			
Level 4+	-	-	-	-	-	-			
Level 4B+	-	-	-	-	-	-			
Level 5+	-	-	-	-	-	-			
Average Point Score	-	-	-	-	-	-			
Writing									
% Expected standard+	83%	82%	82%	-4%	-1%	-4%			
% Higher standard	23% ↓	11%	8% -	+5% ↓	-8%	-15% -			
Scaled Score	103 +	102	101	+0.5	+0.0	-1.2			
Level 4+	-	-	-	-	-	-			
Level 5+	-	-	-	-	-	-			
Average Point Score	-	-	-	-	-	-			
Maths									
% Expected standard+	88% +	92% +	77% ↓	+10%	+15% +	-2% ↓			
% Higher standard	17%	24%	5% - ↓	+0%	+4%	-17% - ↓			
Scaled Score	106 +	106 +	103 ↓	+1.0	+2.0 +	-1.7 - ↓			
Level 4+	-	-	-	-	-	-			
Level 4B+	-	-	-	-	-	-			
Level 5+	-	-	-	-	-	-			
Average Point Score	-	-	-	-	-	-			
Grammar, Punctuation & Spelling									
% Expected standard+	83%	79%	88% +	-2%	-3%	+6%			
% Higher standard	18%	26%	40%	-8%	-8%	+2%			
Scaled Score	105	106	107	-0.8	-0.1	+1.1			
Science									
% Expected standard+	97% +	95% +	97% +	-	-	-			
Level 4+	-	-	-	-	-	-			
Level 5+	-	-	-	-	-	-			
Average Point Score	-	-	-	-	-	-			

Disadvantaged pupils

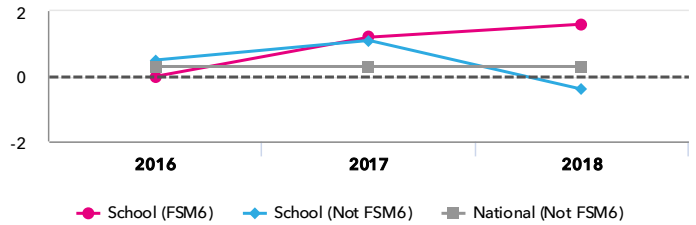
KS2 attainment for disadvantaged pupils 2018

Average Scaled Score (Re, Ma)



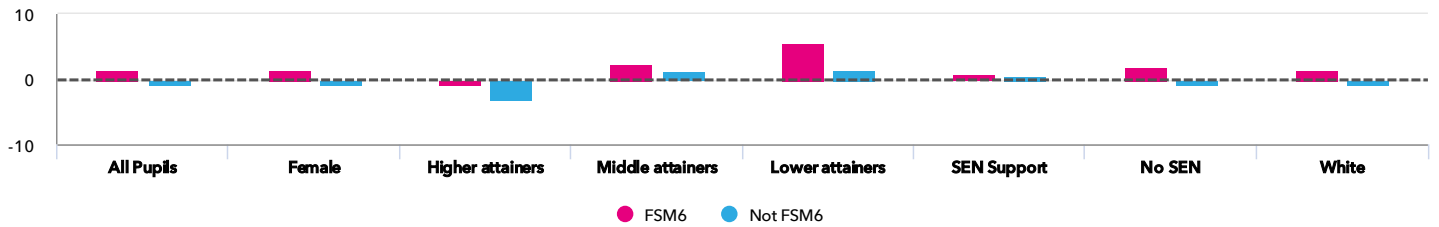
KS2 progress for disadvantaged pupils 2018

Average Scaled Score (Re, Ma)



Progress gap

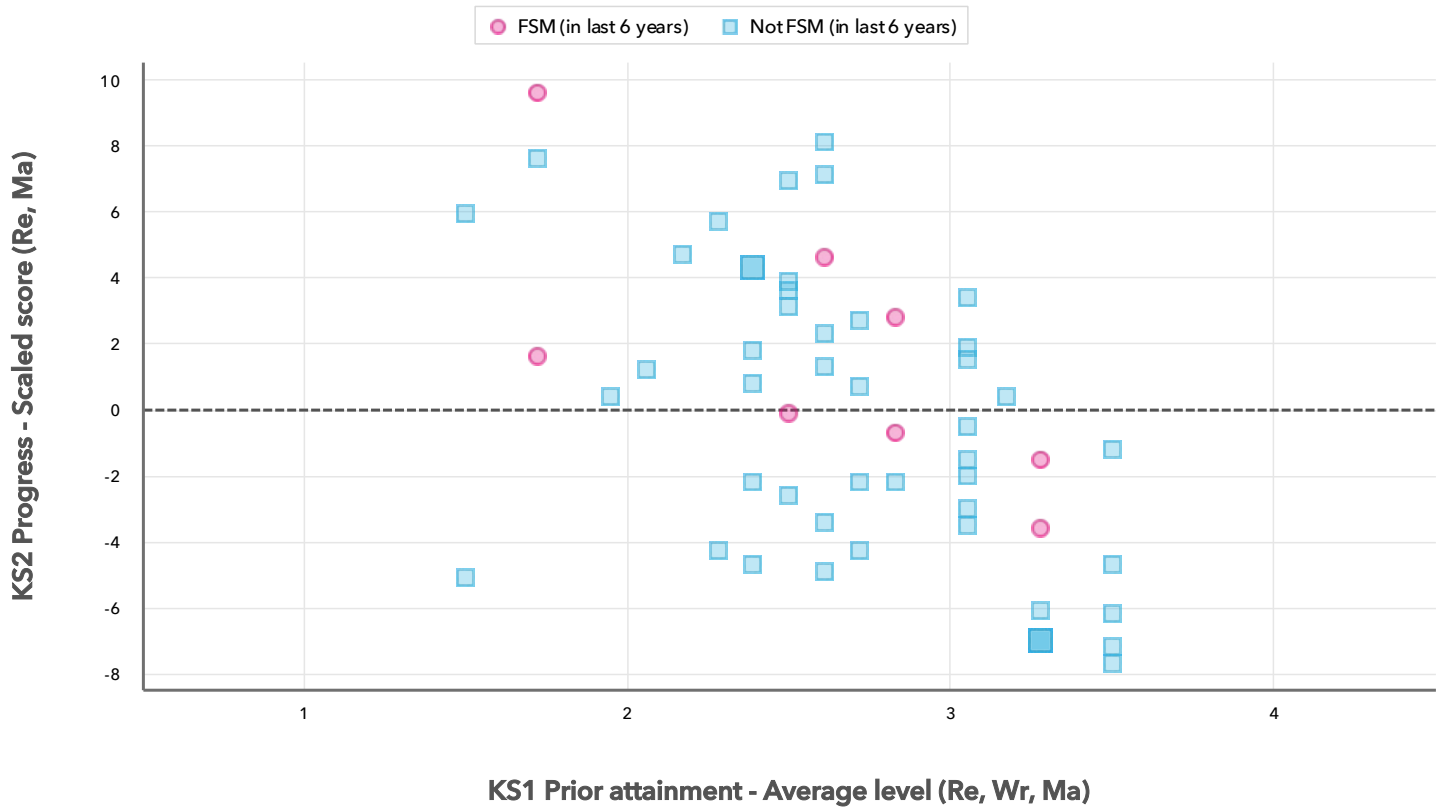
Average Scaled Score (Re, Ma)



Attainment & progress

Pupils		Attainment			Progress				
		FSM6	Not FSM6	Gap	FSM6	Not FSM6	Gap		
Summary	All Pupils	9	51	105.6	104.7	0.9	1.6	-0.4	2
Gender	Female	9	51	105.6	104.7	0.9	1.6	-0.4	2
Prior Attainment	Higher attainers	4	18	107.5	106.6	0.9	-0.8	-3.2	2.4
	Middle attainers	2	16	105.5	105.6	-0.1	2.3	1.3	1
	Lower attainers	2	14	100.5	100	0.5	5.6	1.5	4.1
SEN Group	SEN Support	3	11	102.5	100.5	2	0.7	0.3	0.4
	No SEN	6	40	107.2	105.9	1.3	1.9	-0.5	2.4
Ethnic Group	White	9	51	105.6	104.7	0.9	1.6	-0.4	2

KS2 Pupil scatterplot 2018 60 pupils highlighted by Pupil Premium



Context

Context · Year 6 · 2017 / 2018

		Pupils	Proportion	
			School	National
Summary	All Pupils	60	100%	100%
Gender	Female	60	100%	49%
Prior Attainment	Higher attainers	22	37%	31%
	Middle attainers	18	30%	35%
	Lower attainers	16	27%	29%
Pupil Premium	FSM (in last 6 years)	9	15%	30%
	Not FSM (in last 6 years)	51	85%	69%
FSM	FSM	5	8%	15%
	Not FSM	55	92%	85%
FSM Ever	FSM (ever)	9	15%	31%
	Not FSM (ever)	51	85%	69%
Term of Birth	Autumn Term	19	32%	33%
	Spring Term	20	33%	32%
	Summer Term	21	35%	35%
SEN Group	SEN Support	14	23%	15%
	No SEN	46	77%	82%
EAL	First language not English	15	25%	20%
	First language English	45	75%	80%
Mobility	Joined before Y5	60	100%	93%
Ethnicity	White	60	100%	74%

Absence · Year 6 · 2017 / 2018

		Pupils	Absence		Persistent absentees	
			School	National	School	National
Summary	All Pupils	60	4%	4%	3%	5%
Gender	Female	60	4%	4%	3%	5%
Prior Attainment	Higher attainers	22	3%	3%	0%	2%
	Middle attainers	18	4%	4%	0%	4%
	Lower attainers	16	4%	5%	13%	10%
Pupil Premium	FSM (in last 6 years)	9	5%	5%	11%	12%
	Not FSM (in last 6 years)	51	4%	3%	2%	3%
FSM	FSM	5	6%	6%	20%	16%
	Not FSM	55	4%	4%	2%	4%
FSM Ever	FSM (ever)	9	5%	5%	11%	11%
	Not FSM (ever)	51	4%	3%	2%	3%
Term of Birth	Autumn Term	19	3%	4%	0%	6%
	Spring Term	20	5%	4%	5%	6%
	Summer Term	21	4%	4%	5%	5%
SEN Group	SEN Support	14	5%	5%	14%	10%
	No SEN	46	4%	4%	0%	4%
EAL	First language not English	15	4%	4%	7%	5%
	First language English	45	4%	4%	2%	6%
Mobility	Joined before Y5	60	4%	4%	3%	5%
Ethnicity	White	60	4%	4%	3%	6%